



The Art of
Olive Belnap Jenson



Olive Christiana Belnap Jenson was born April 24, 1888, in Ogden, Utah. She developed an interest in art early in life, and by 1909, her increasing skill as a gifted painter was clearly evident in the exceptional quality of her porcelain painting. She painted many fine vases, plates, and brooches, as well as cups and saucers - presenting them as gifts to friends and using them to serve from when entertaining. In the Spring of 1913, her art education was wonderfully enriched when Olive had the opportunity of traveling to Europe with her father to meet her half-brother upon the completion of his service as a missionary in the Swiss-German Mission of The Church of Jesus Christ of Latter-day Saints. While there they traveled throughout western Europe for two months, visiting its many great museums and art galleries. Here Olive was able to gaze first-hand upon the works of the masters and study up-close their individual styles and techniques, as well as their manner of composition and use of color and light. Upon returning home Olive was sought out by the president of the Weber Academy (now Weber State University) and offered a position as art instructor where she taught until the year before her marriage to Dr. Conrad H. Jenson in 1920. Just prior to assuming her new position, Olive prepared by studying for two brief weeks under the tutelage of A. B. Wright who was then teaching at the L.D.S. College in Salt Lake City. Later, she continued her studies by enrolling at the Chicago Art Institute and Emma Church School of Art and Design for three



successive summers from 1917 to 1919. In the Fall of 1928, she traveled with her husband and children (Arlene and Conrad) to Vienna Austria where they remained until the following Spring. Although the purpose of their travel was to further the medical training of her husband, Olive took advantage of the opportunity and furthered her own training by studying under Ilka Kuczynska, a prominent Viennese artist who conducted classes in still life during the winter months. The greatest influences on Olive's painting, however, were renowned Utah artists J. T. Harwood and LeConte Stewart, under whose instruction she benefitted most profoundly, and with whom she enjoyed her most rewarding artistic associations. Through hard work and dedication Olive became an accomplished artist in her own right, her paintings being widely exhibited throughout her life in local exhibitions alongside those of her prominent instructors, receiving much acclaim. Two of her earlier paintings were purchased by the state for inclusion in their art collection and hung for a time at the Utah State Capitol Building. One is a Chicago street scene in the ghetto and the other a picture of snapdragons. Most of her paintings, though, she kept for the enjoyment of her family or gave away to close friends and associates rather than sell. Thus, her work is virtually unknown today. Olive painted throughout her life into the early 1960's, until the deterioration of her eyesight from macular degeneration brought her painting career to a close. She passed away on July 10, 1979, at age 91.





About 1893



About 1905



1911



Photograph taken in London - 1913



Olive and her art students at the Weber Academy



The Art Institute of Chicago



Olive about the time she studied at the Art Institute of Chicago

Olive, Arlene, Conrad Sr. and Conrad Jr - 1928.
Taken as their passport photo prior to leaving for
Vienna Austria.





"Plein aire" painting - 1930's



Olive receiving instruction from J. T. Harwood - 1930's



1930's



Early 1960's



Porcelain



Miss Botney



*1. Detail from plate (preceding page)
Michael Jenson Collection*

*2. Study for plate
Watercolor (9.5" x 9.5")
Michael Jenson Collection*



*3. Study for plate
Watercolor (10" x 10")
Michael Jenson Collection*



4. Roses
Plate (8.5")
Michael Jenson Collection



*5. Roses
Plate (8.5")
Dean and Teri Flanders Collection*



6. Berries, 1910
Plate (8.5")
Michael Jenson Collection



7. Geraniums, 1910
Plate (8.5")
Maren Jensen Collection



8. Flowers, 1910
Plate (8.5")
Conrad and Anne Jensen Collection



9. *Chrysanthemums*, 1910
Plate (8.5")
Conrad and Anne Jenson Collection



10. Roses, 1909
Plate (8.5")
Conrad and Anne Jensen Collection



11. *Flowers*, 1909
Plate (8.5")
Conrad and Anne Jenson Collection



12. Flowers
Plate (8.5")
Conrad and Anne Jensen Collection



13. Pansies, 1910
Oval-shaped dish (8")
Conrad and Anne Jenson Collection



14. *Violas*, 1910
Dish (7.5")
Conrad and Anne Jenson Collection



15. *Violas, 1910*
Tea Service
Conrad and Anne Jensen Collection



16. *Roses*
Lamp
Conrad and Arne Jensen Collection



*17. Trees
Vase (11" h)
Dean and Teri Flanders Collection*



18. Sketch
Pencil (8.5" x 11")
Michael Jenson Collection



19. Birds (View A)
Vase (11" h)
Conrad and Anne Jenson Collection



20. *Birds (View B)*
Vase (11" h)
Conrad and Anne Jenson Collection



21. *Sketch*
Pencil (8.5" x 11")
Michael Jenson Collection



22. *Birds (front)*
Vase (11" h)
Conrad and Anne Jensen Collection



23. *Birds (back)*
Vase (11" h)
Conrad and Anne Jensen Collection



24. *Decorative vase*
Early 1900's (5.25" h)
Michael Jenson Collection



25. *Roses*
Bud vase (6.75" h)
Conrad and Anne Jenson Collection



26. *Roses*
Vase (11.5" h)
Conrad and Anne Jensen Collection



27. *Roses*
Vase
Marcia and Scott Stornetta Collection



Landscape





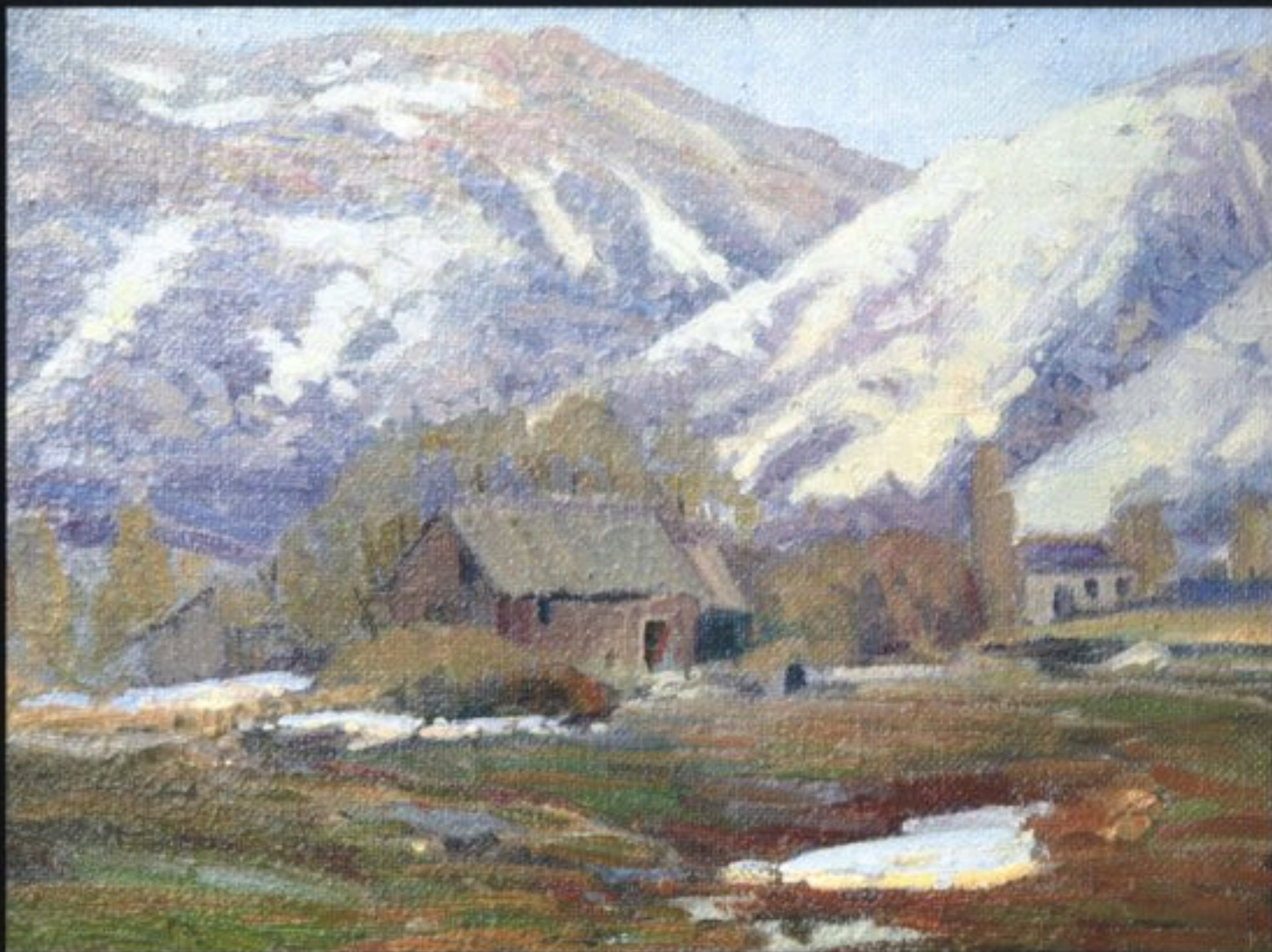
28. *Landscape (preceding page)*
Oil on board (19.5" x 15.5")
Dean and Terri Flanders Collection



29. *Seascape (early, unsigned work attributed to Olive)*
Pastel (18" x 8.5")
Michael Jenson Collection



30. *House in Early Spring*
Oil on canvas (11" x 11.5")
Marcia and Scott Storretta Collection



31. *Spring Thaw*
Oil on board (20" x 16")
Mark and Dianne Flanders Collection



32. *Spring Thaw*
Oil on board (20" x 16")
Marcia and Scott Stornetta Collection



Olive B. Jones



34. Ben Lomond
Oil on board
Marcia and Scott Stormetta Collection



35. Orchard in Spring
Oil on board
Marcia and Scott Stormetta Collection

36. Ben Lomond (opposite)
Oil on board (24" x 18")
Marcia and Scott Stormetta Collection



36. Spring
Oil on board (16" x 12")
Kristine and Bill Jordan Collection



37. *House in Spring*
Oil on board (20" x 16")
Michael Jenson Collection



*38. Spring Landscape
Oil on board (20" x 16")
Marcia and Scott Stornetta Collection*

*39. Large Tree in Front of House (opposite)
Oil on board (20" x 16")
David and Michelle Jensen Collection*



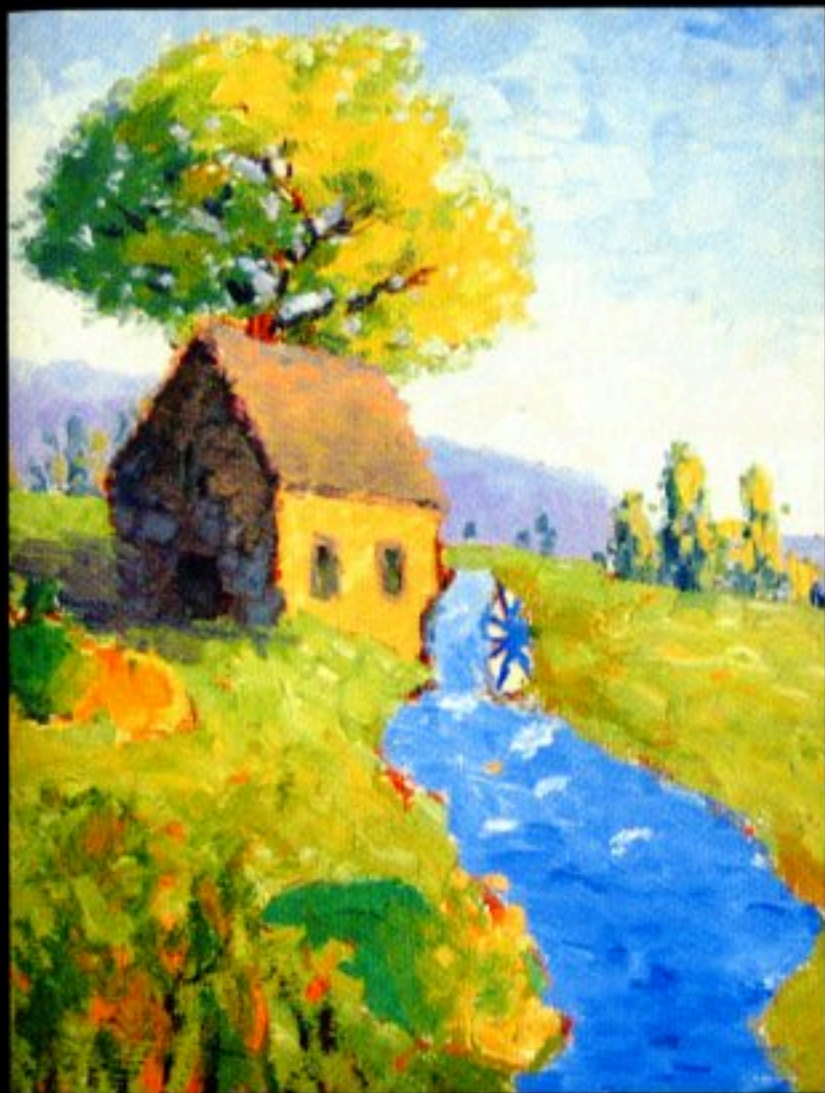


40. *House in Spring*
Oil on board (20" x 16")
Marcia and Scott Stornetta Collection



41. Wagon Wheels
Oil on board
Marcia and Scott Stornetta Collection





42. Ben Lomond (opposite)
Oil on board (20" x 16")
Marcia and Scott Stornetta Collection



44. House with Path
Oil on board (9" x 12")
Steve and Pam Flanders Collection

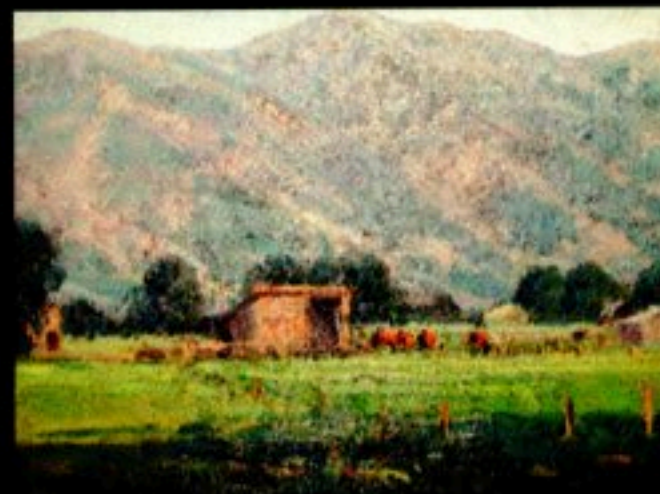
43. Mill with Stream
Oil on board (9" x 12")
Marcia and Scott Stornetta Collection



45. *Landscape*
Oil (12" x 16")
Marcia and Scott Stormetta Collection



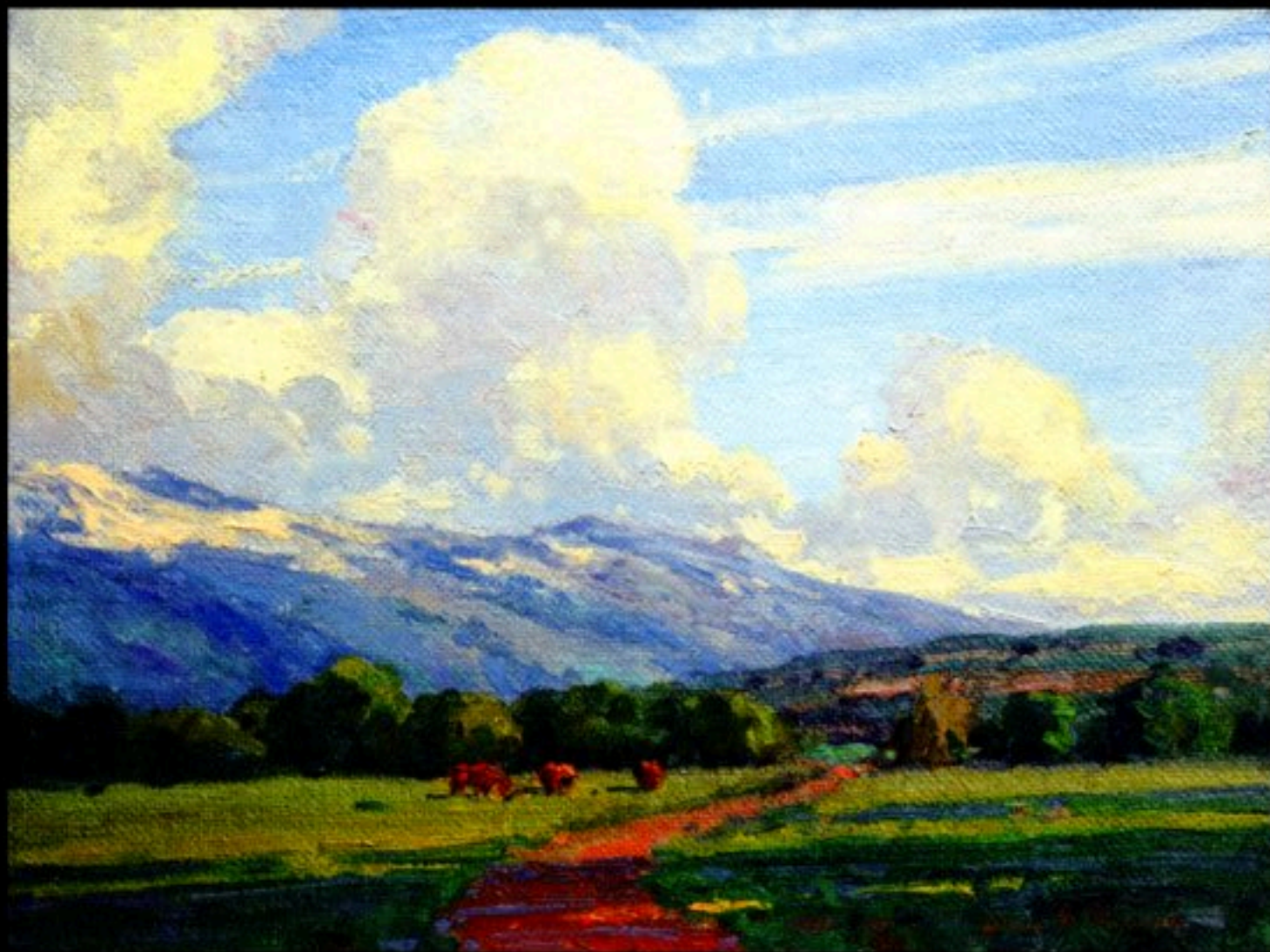
46. *Landscape*
Oil (16" x 12")
Steve and Pam Flanders Collection



47. *Grazing Cattle*
Oil (16" x 12")
Steve and Pam Flanders Collection



48. Landscape
Oil (16" x 12")
Steve and Pam Flanders Collection



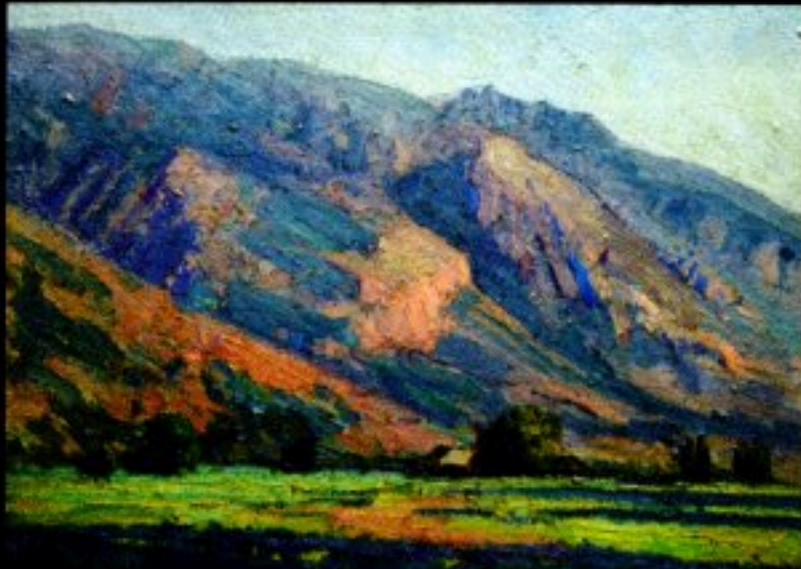
49. *Grazing Cattle*
Oil on board (16" x 12")
Maren Jensen Collection

*50. Landscape
Oil on board (12" x 8.5")
Kristine and Bill Jordan Collection*



*51. Landscape
Oil on board (12" x 9")
Kristine and Bill Jordan Collection*





52. *Landscape*
Oil on board (16" x 12")
Rebecca Jenson and Scott Gardner Collection



53. *Landscape*
Oil on board (12" x 9")
Rebecca Jenson and Scott Gardner Collection



54. Landscape
Oil (16" x 12")
Conrad and Crystal Jensen Collection



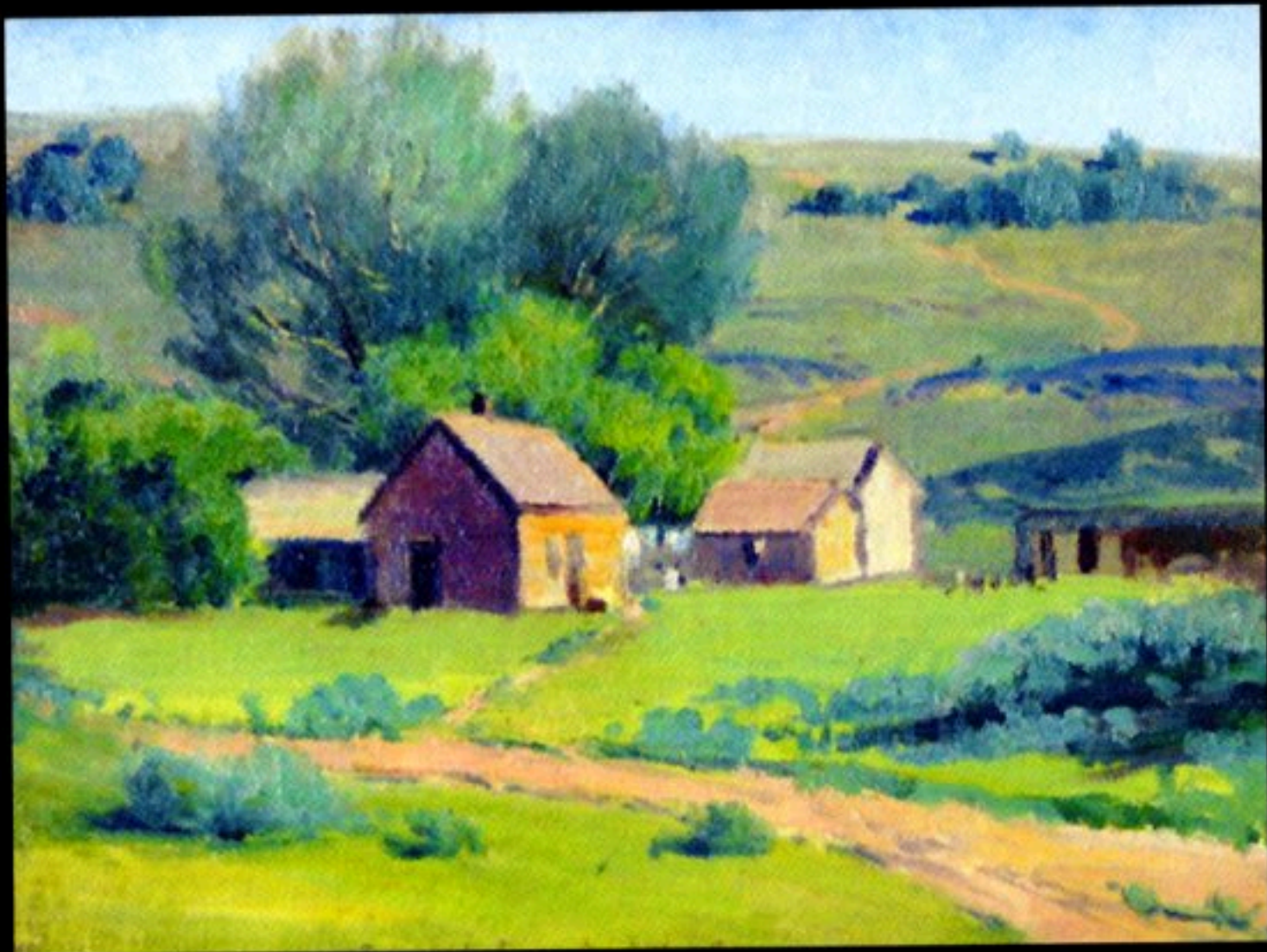
55. *Field with Cabbages*
Oil on board (12" x 8")
Maren Jensen Collection

56. Landscape
Oil on canvas (11.75" x 7.75")
Rebecca Jensen and Scott Gardner Collection



57. Barn
Oil
Marcia and Scott Stornetta Collection





58. *Landscape*
Oil on board (16" x 12")
Marcia and Scott Stornetta Collection



59. *House at the End of the Road*
Oil on board (10" x 9")
Mark and Dianne Flanders Collection

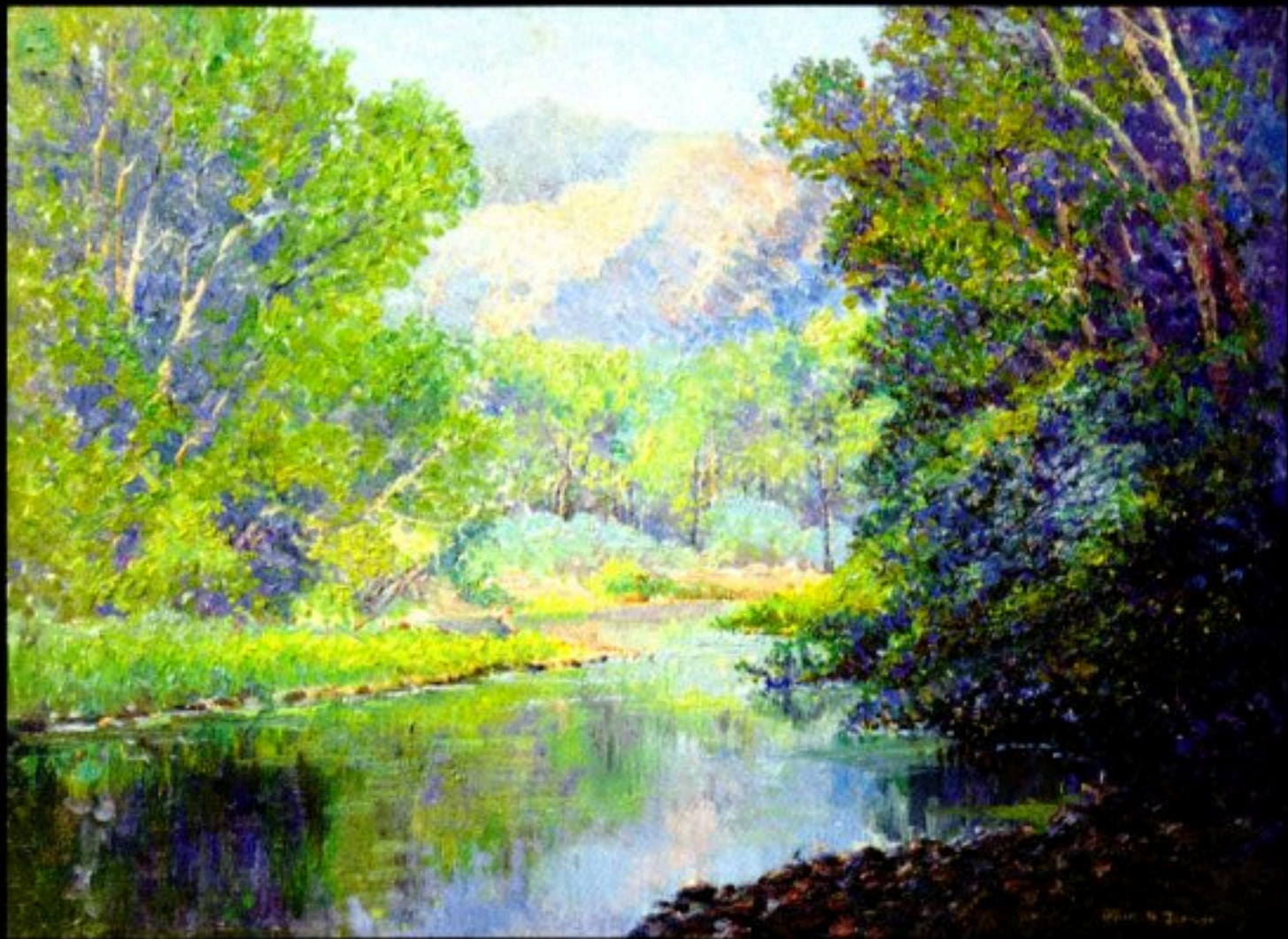


60. Landscape
Oil on board (17.25" x 16")
Conrad and Crystal Jenson Collection



61. *From the Shed*
Oil on board (20" x 16")
Mark and Dianne Flanders Collection





62. *Waterscape (opposite)*
Oil on board (16" x 12")
Maren Jensen Collection

63. *From the Bank*
Oil on canvas (24" x 18")
Mark and Dianne Flanders Collection



64. Landscape
Oil on board (16" x 12")
Kristine and Bill Jordan Collection



65. *Landscape*
Oil on board
Dean and Teri Flanders Collection



66. *Stagnant Waters*
Oil on board (20" x 16")
Dean and Teri Flanders Collection



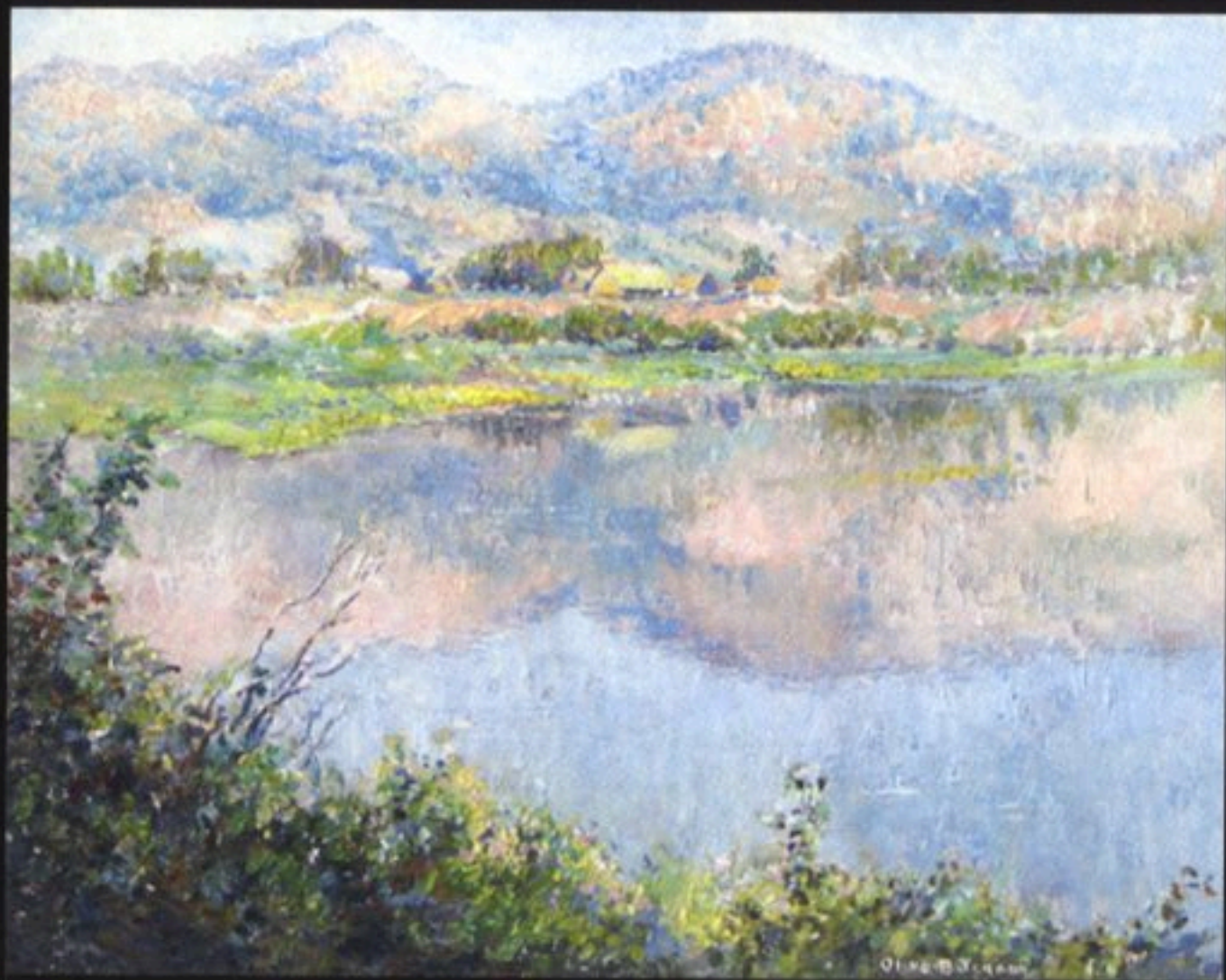
67. Ogden River
Oil on board (20" x 16")
Maren Jensen Collection



68. *Waterscape*
Oil on board (12" x 9")
Steve and Pam Flanders Collection



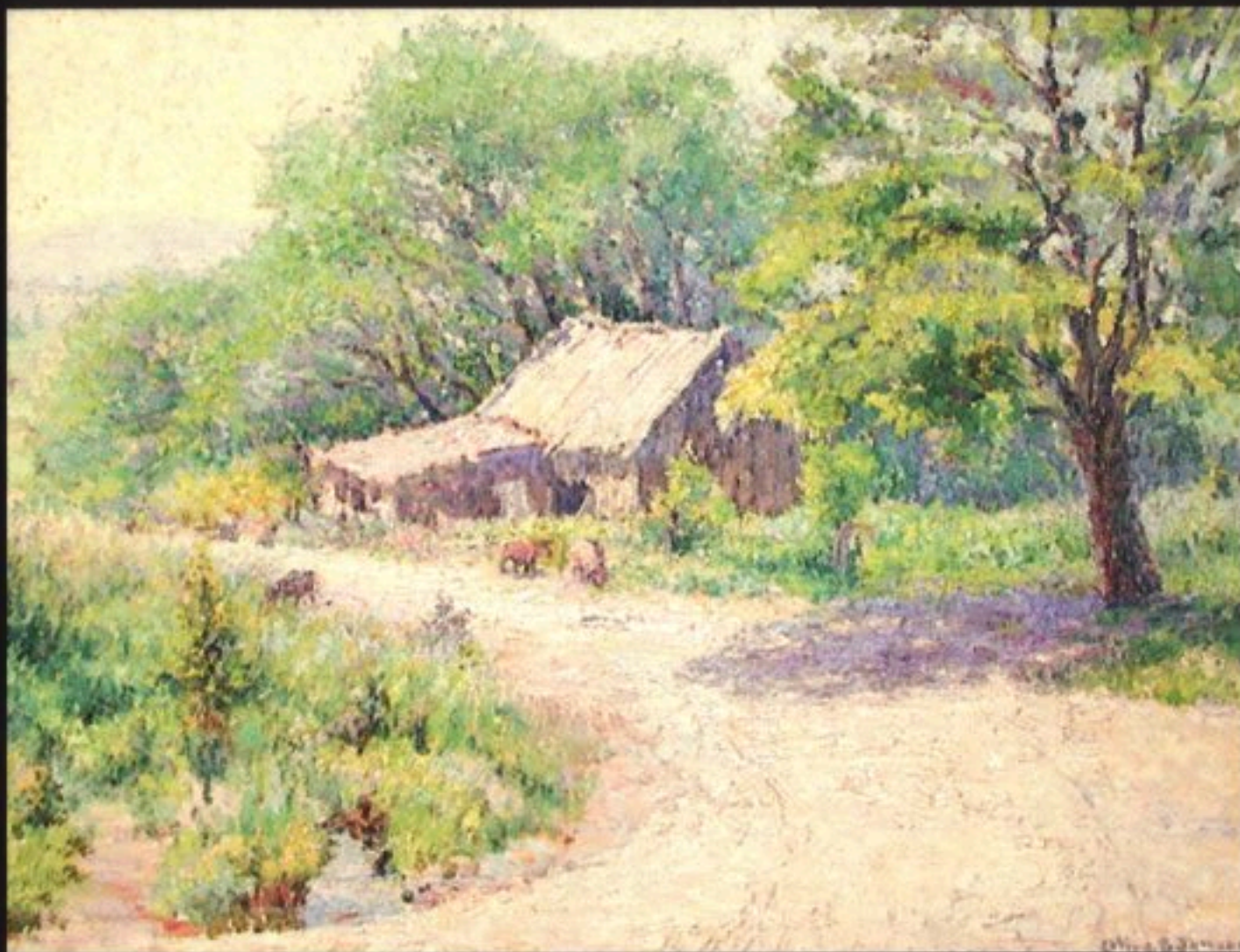
69. *Water Gates*
Oil on board (24" x 19")
Marcia and Scott Stornetta Collection



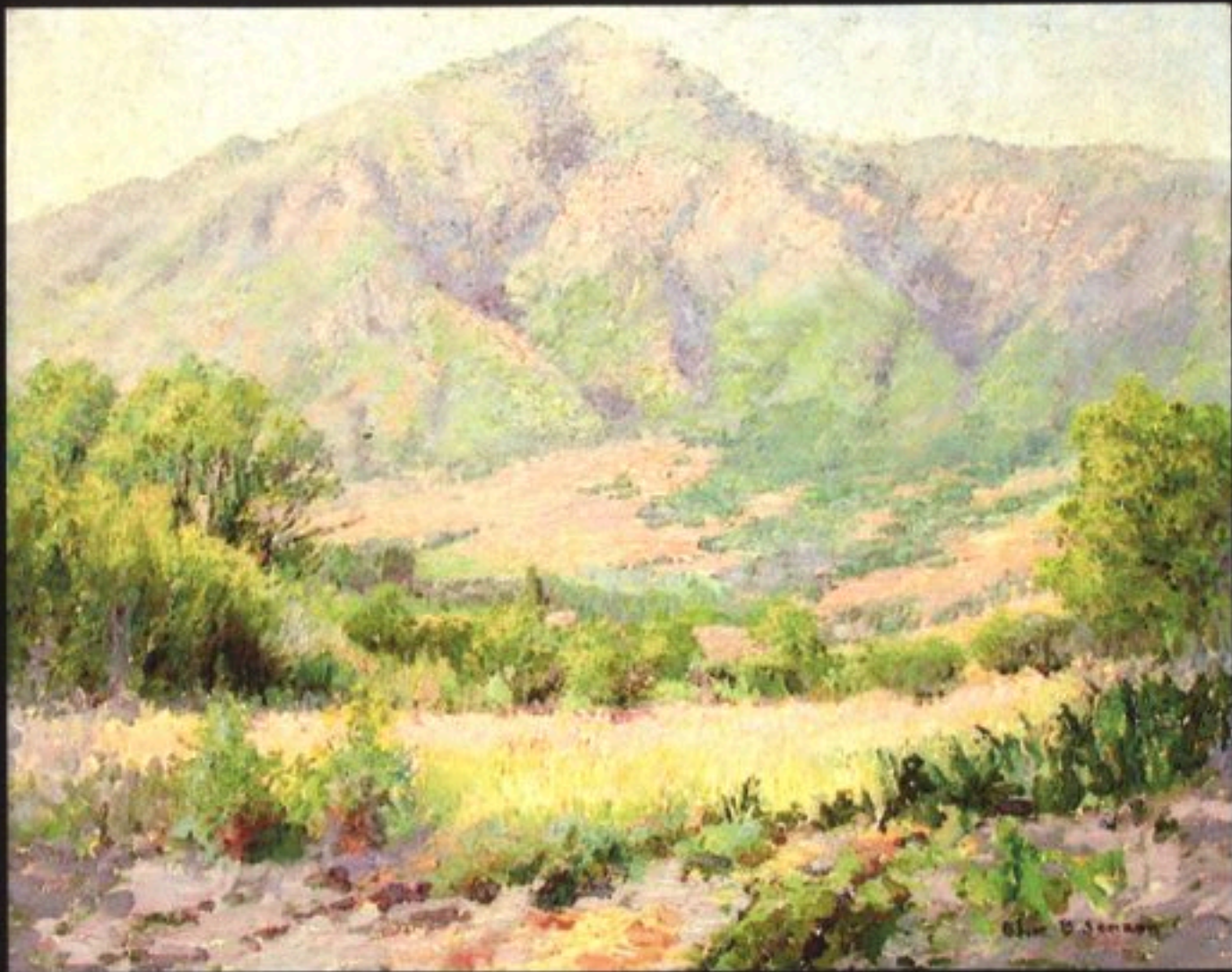
70. *Pineview*
Oil on board (20" x 16")
Marcia and Scott Storretta Collection



71. Barn
Oil on board (20" x 16")
Marcia and Scott Stornetta Collection



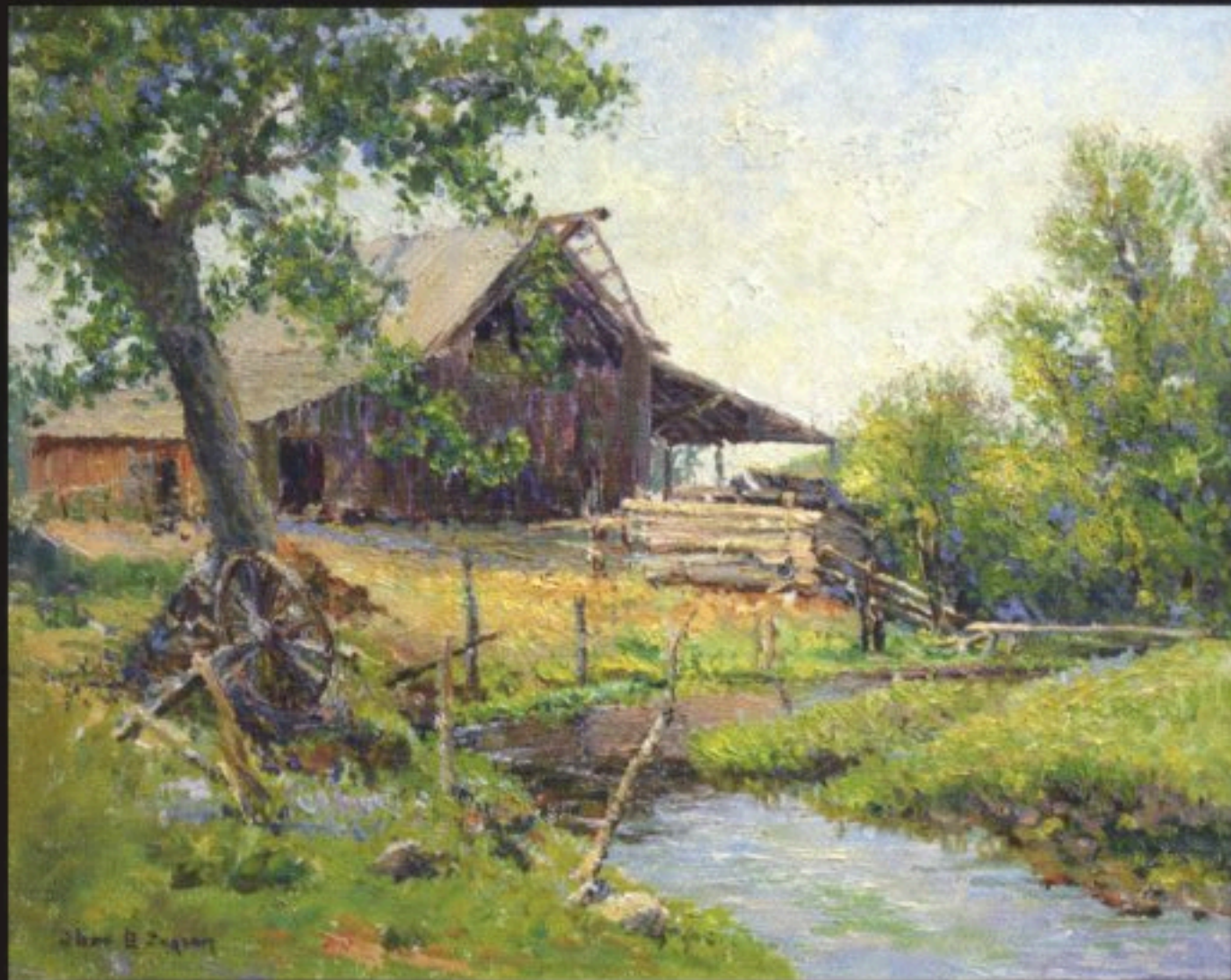
72. *Barn*
Oil on board (18" x 14")
Steve and Pam Flanders Collection



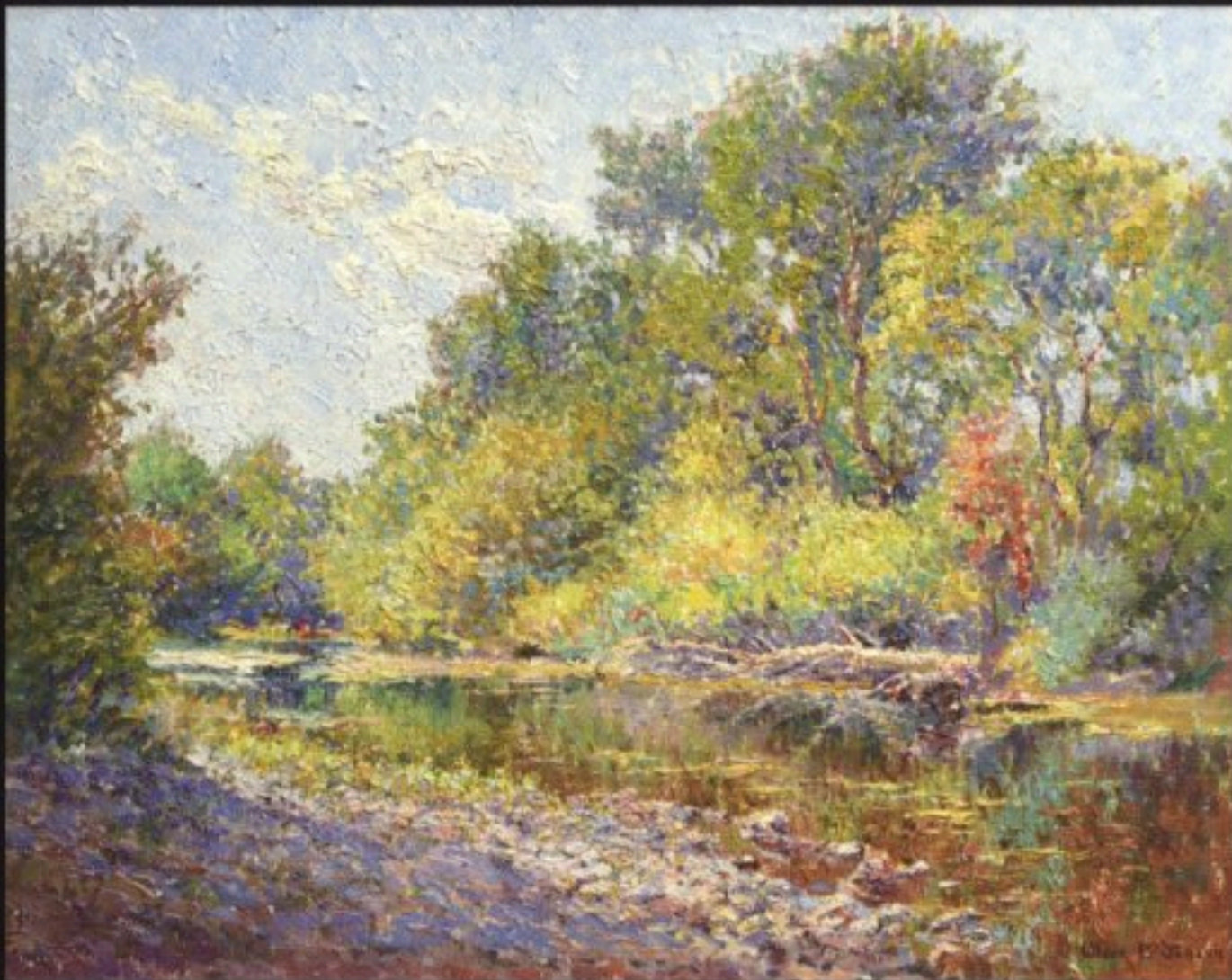
73. Ben Lomond
Oil on board (20" x 15")
Steve and Pam Flanders Collection



74. *Summer Slough*
Oil on board (20" x 16")
Conrad and Anne Jensen Collection



75. *Barn*
Oil on board (20" x 16")
Conrad and Anne Jenson Collection



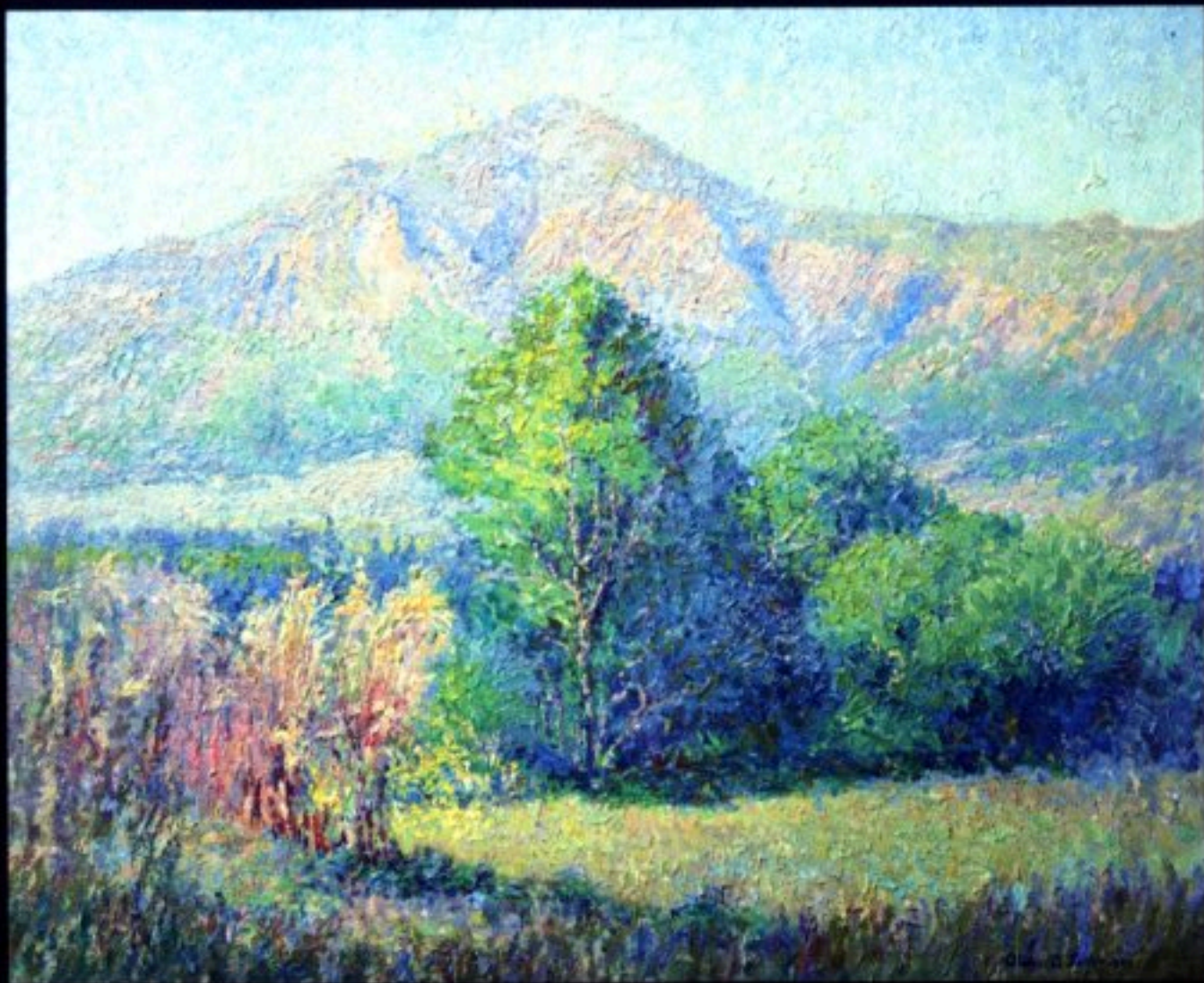
76. Waterscape
Oil on board (20" x 16")
Conrad and Anne Jensen Collection

77. House in Autumn (opposite)
Oil on board (20" x 16")
Kristine and Bill Jordan Collection
(also Steve and Pam Flanders Collection - copy)





Olive B. Tennyson



78. Autumn Landscape (opposite)
Oil on canvas (24" x 20")
Mark and Dianne Flanders Collection

79. Ben Lomond
Oil on board (24" x 20")
Mark and Dianne Flanders Collection



80. *Kerr Cabin at Millcreek*
Oil on board
Marcia and Scott Stornetta Collection



81. *Aspens in Millcreek*
Oil on board (16" x 20")
Kristine and Bill Jordan Collection



82. *Haystacks*
Oil on board (16" x 12")
Conrad and Crystal Jensen Collection



83. *Haystacks*
Oil on board (12" x 8")
Marcia and Scott Stormetta Collection



84. *Haystacks*
Oil on board (20" x 16")
Marcia and Scott Stornetta Collection



85. *Hoystacks*
Oil (12" x 8")
Steve and Pam Flanders Collection



86. *Haystacks*
Oil on board (16" x 12")
Marcia and Scott Stometta Collection



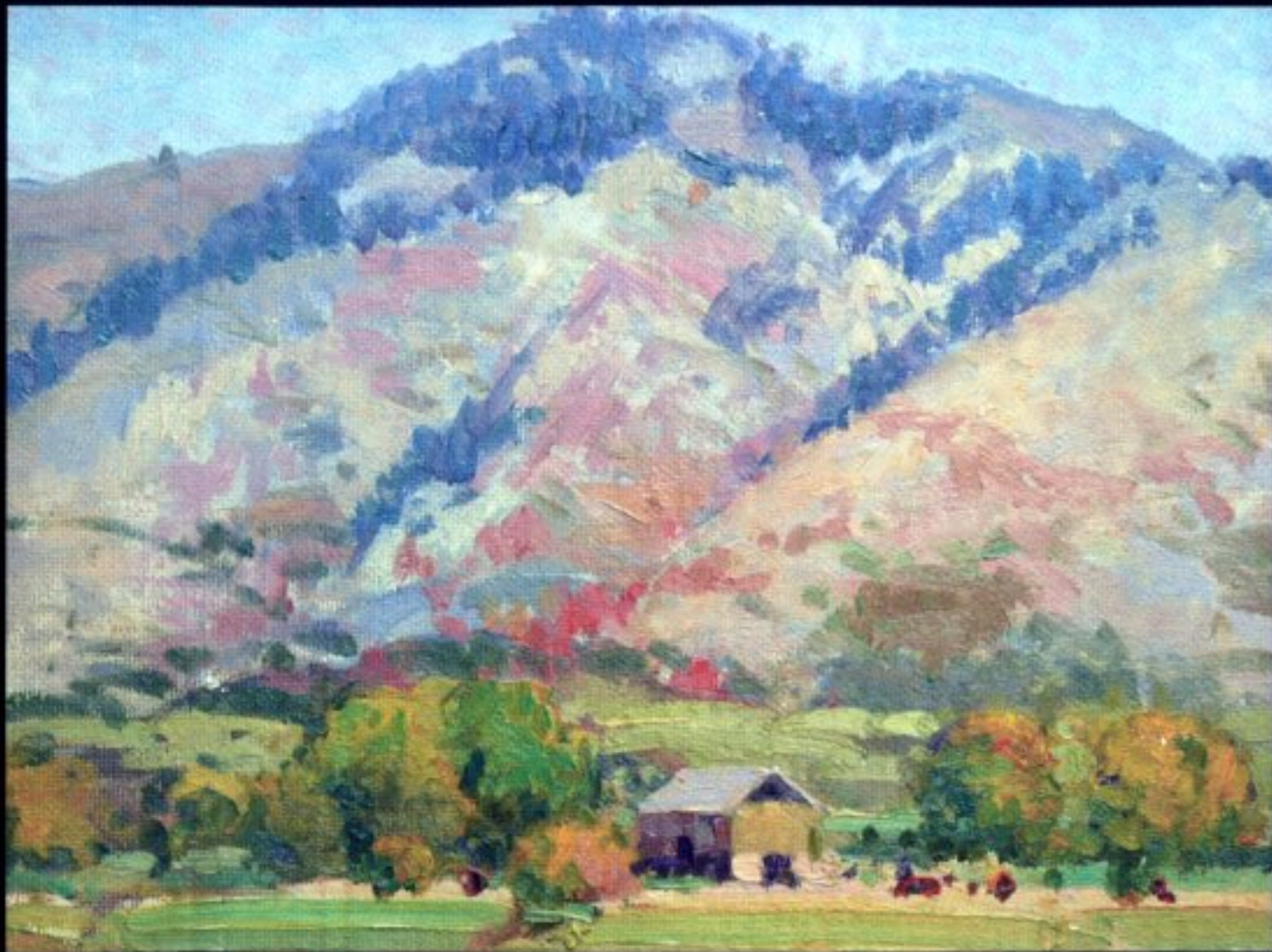
87. *Autumn Landscape*
Oil on board
Marcia and Scott Storretta Collection



88. Autumn Landscape
Oil on board (12" x 10")
Mark and Dianne Flanders Collection



89. Autumn Landscape
Oil on board (16" x 12")
Michael Jenson Collection



90. *Autumn Landscape*
Oil on board (16" x 12")
Michael Jenson Collection



91. Barn
Oil on board (19" x 15")
Steve and Pam Flanders Collection



92. Barn

Oil on board (20" x 16")

Marcia and Scott Stornetta Collection



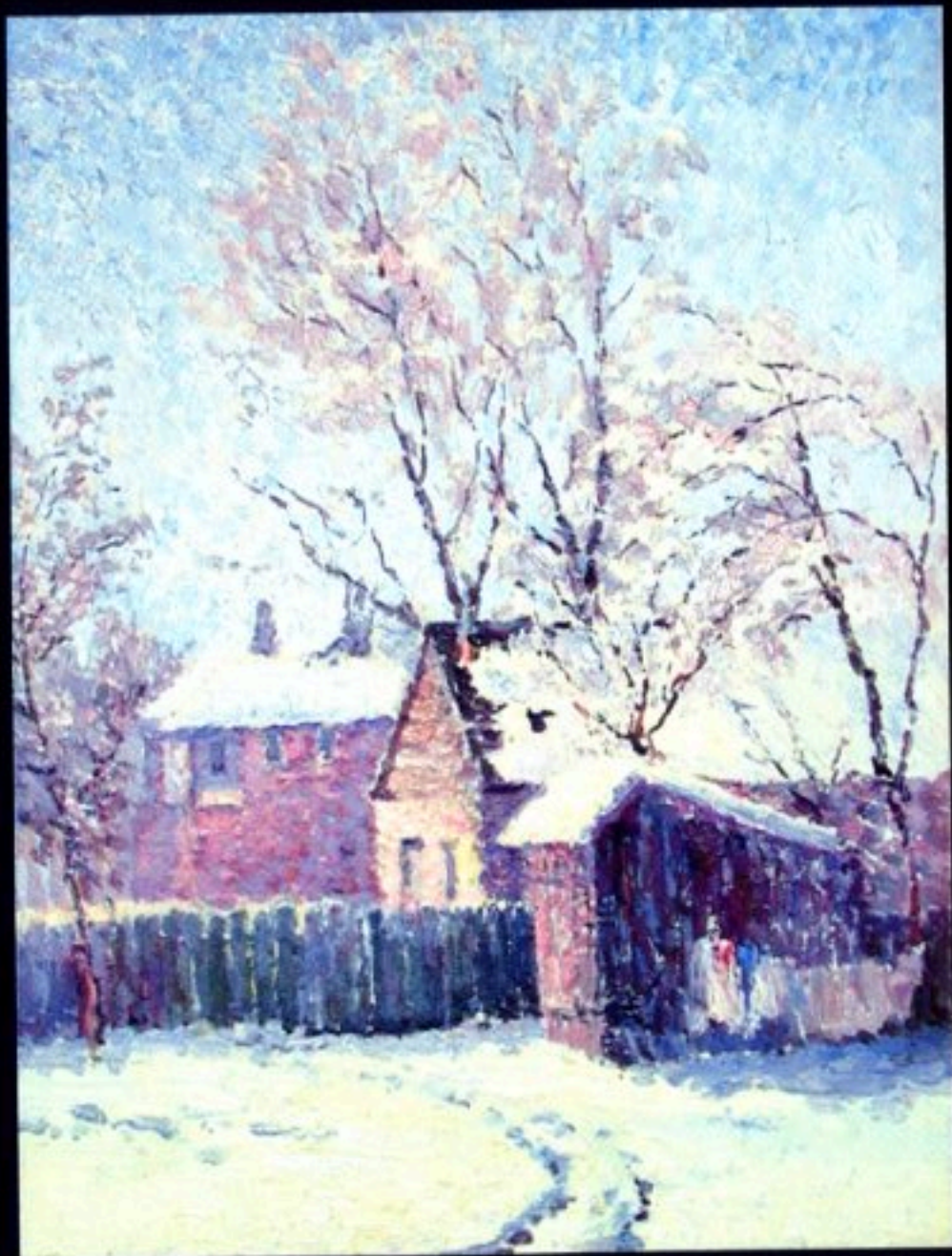
93. *Autumn Landscape (opposite)*
Oil on canvas (20" x 16")
Mark and Dianne Flanders Collection



94. *Autumn Landscape*
Oil (9" x 6.5")
Marcia and Scott Stornetta Collection



95. *Bridge in Winter*
Pastel (8.5" x 11")
(early, unsigned work attributed to Olive)
Marcia and Scott Stornetta Collection



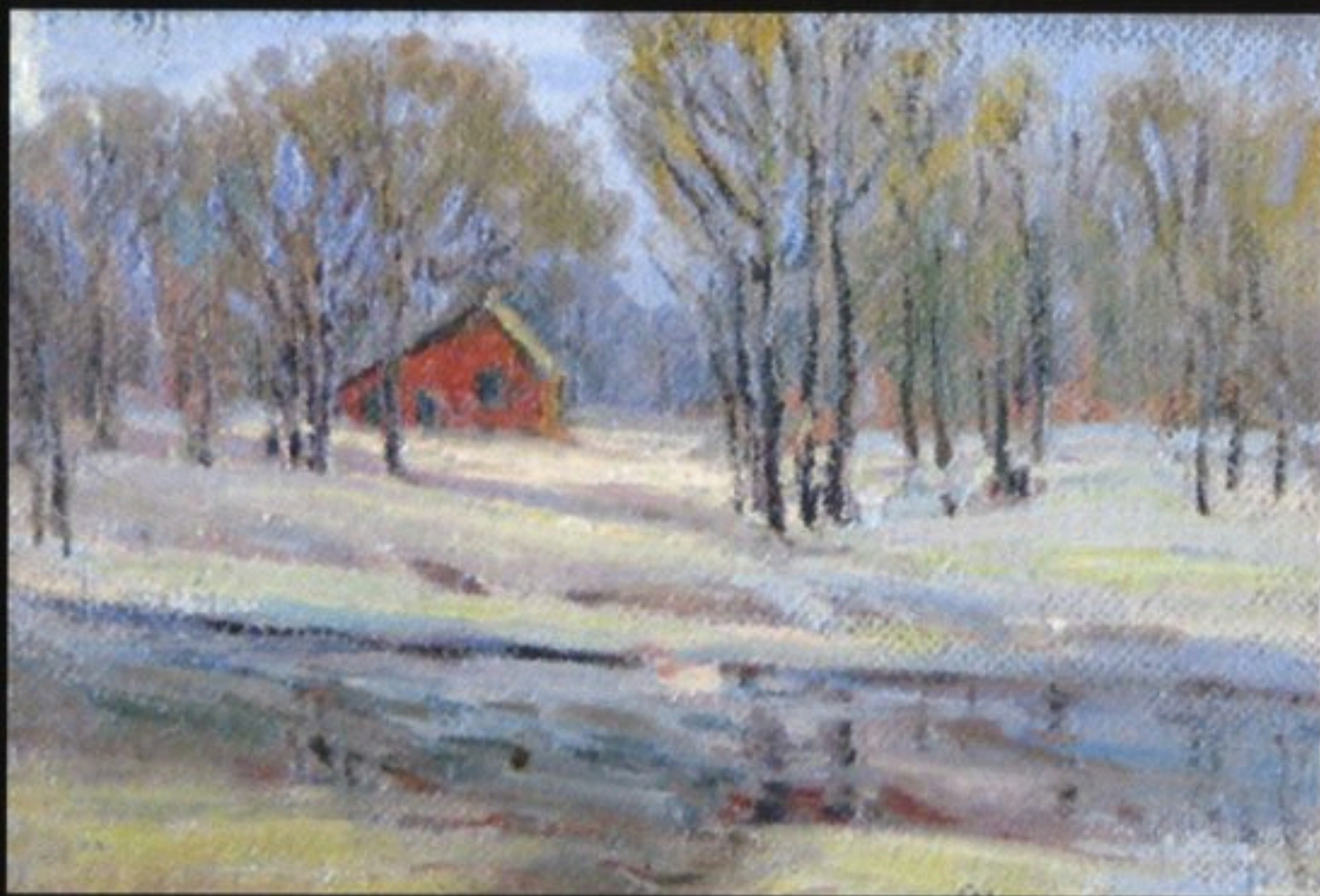
96. Wash Day
Oil on board (12" x 16")
Steve and Pam Flanders Collection



97. *Winter Stream*
Oil on canvas (12" x 8")
Mark and Dianne Flanders Collection



98. *Winter Stream*
Oil on board (16" x 12")
Steve and Pam Flanders Collection



99. *Winter Landscape*
Oil on board (12" x 8")
Marcia and Scott Stormetta Collection



100. Winter Scene
Oil on board (16" x 12")
Conrad and Anne Jensen Collection



101. *Winter Landscape*
Oil on board (12" x 9")
Marcia and Scott Storretta Collection



102. *Winter Landscape*
Oil on board (12" x 9")
Marcia and Scott Stornetta Collection



103. *Winter Landscape*
Oil on board (12" x 9")
Marcia and Scott Stornetta Collection



104. *Winter Landscape*
Oil on board (16" x 12")
Marcia and Scott Stormetta Collection



105. *Winter Landscape*
Oil on board (9" x 11")
Marcia and Scott Stornetta Collection

106. *Road in Winter (opposite)*
Oil on board (20" x 16")
Conrad and Crystal Jensen Collection





Portraiture





107. Meditation - detail (preceding page)
Oil on board (18" x 24")
Mark and Dianne Flanders Collection

108. Old Man
Charcoal (6" x 8")
(probably done while a student at
the Art Institute of Chicago)
Marcia and Scott Stornetta Collection



109. *Ballerina*
Charcoal (7" x 10")
(probably done while a student at
the Art Institute of Chicago)
Marcia and Scott Stornetta Collection



110. Man - unknown
Oil on board (16" x 20")
Marcia and Scott Stometta Collection



111. Soldier - unknown
Oil on board (16" x 20")
Conrad and Arne Jensen Collection



112. Woman - unknown
Oil on board (16" x 20")
Conrad and Anne Jensen Collection



113. Meditation
Oil on canvas (18" x 24")
Mark and Dianne Flanders Collection



Still Life



Oliver B. Johnson

114. Peppers (preceding page)
Oil on board (20" x 16")
Mark and Dianne Flanders Collection



115. Vegetables (above)
Oil on board (16" x 12")
Conrad and Anne Jensen Collection

116. Peaches (opposite)
Oil on board (20" x 16")
Conrad and Anne Jensen Collection



Oliver B. Johnson



Olive H. Jensen



117. Squash (opposite)
Oil on board (20" x 16")
Dean and Teri Flanders Collection

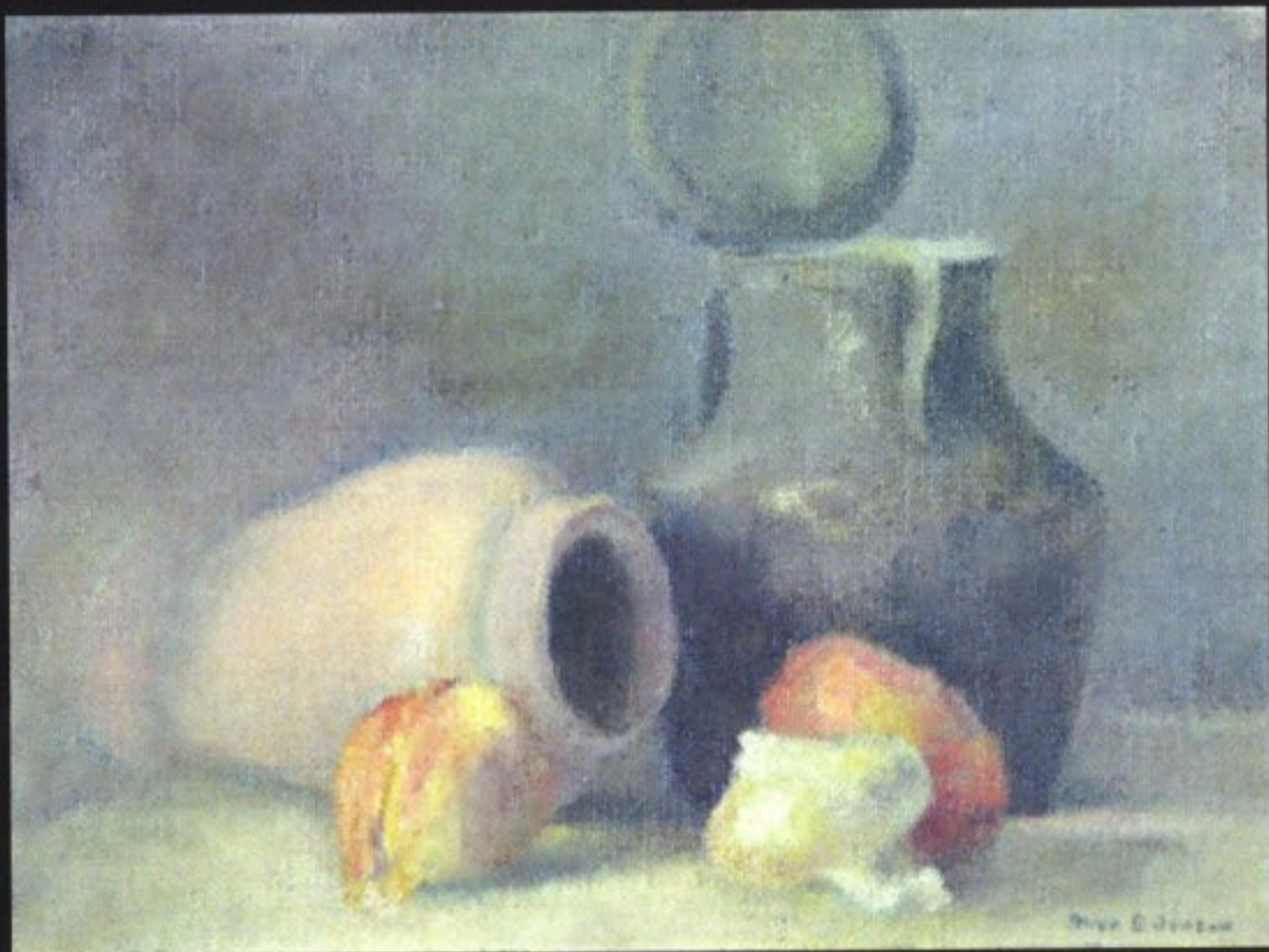
118. Still Life
Oil on board
Marcia and Scott Stormetta Collection



119. Still Life
Oil on canvas (20" x 16")
Conrad and Anne Jensen Collection



120. *Still Life*
Oil on canvas (20" x 16")
Dean and Teri Flanders Collection



121. *Still Life*
Oil on canvas
Marcia and Scott Stornetta Collection



122. *Chrysanthemums*
Watercolor (9" x 13")
Michael Jensen Collection



123. *Roses*
Oil on board (16" x 12")
Conrad and Anne Jensen Collection



124. *Nasturtiums*
Oil on board (16" x 12")
Rebecca Jenson and Scott Gardner Collection



125. *Iris*
Oil on board (30" x 24")
Conrad and Anne Jensen Collection



126. Lilacs
Oil on board (24" x 20")
Mark and Dianne Flanders Collection



127. Dahlias
Oil on board (30" x 25")
Conrad and Anne Jensen Collection



128. Dahlias
Oil on board (30" x 24")
Marcia and Scott Stornetta Collection



129. *Conopsis*
Oil on board
Dean and Teri Flanders Collection



130. Zinnias
Oil on board
Dean and Teri Flanders Collection



131. Dahlias
Oil on board (20" x 24")
Conrad and Anne Jensen Collection



132. Peonies
Oil on board (20" x 24")
Conrad and Anne Jensen Collection



133. *Lilies and Delphinium*
Oil on board (24" x 30")
Conrad and Anne Jensen Collection



134. Azaleas
Oil on board (24" x 30")
Conrad and Anne Jensen Collection



135. *Chrysanthemums and Delphinium*
(opposite)
Oil on board (30" x 25")
Dean and Teri Flanders Collection



136. *Chrysanthemums*
Oil on board (20" x 24")
Maren Jensen Collection



137. *Red and Blue*
Oil on board (20" x 24")
Conrad and Anne Jenson Collection



138. Larkspur
Oil on canvas (16" x 24")
Mark and Dianne Flanders Collection



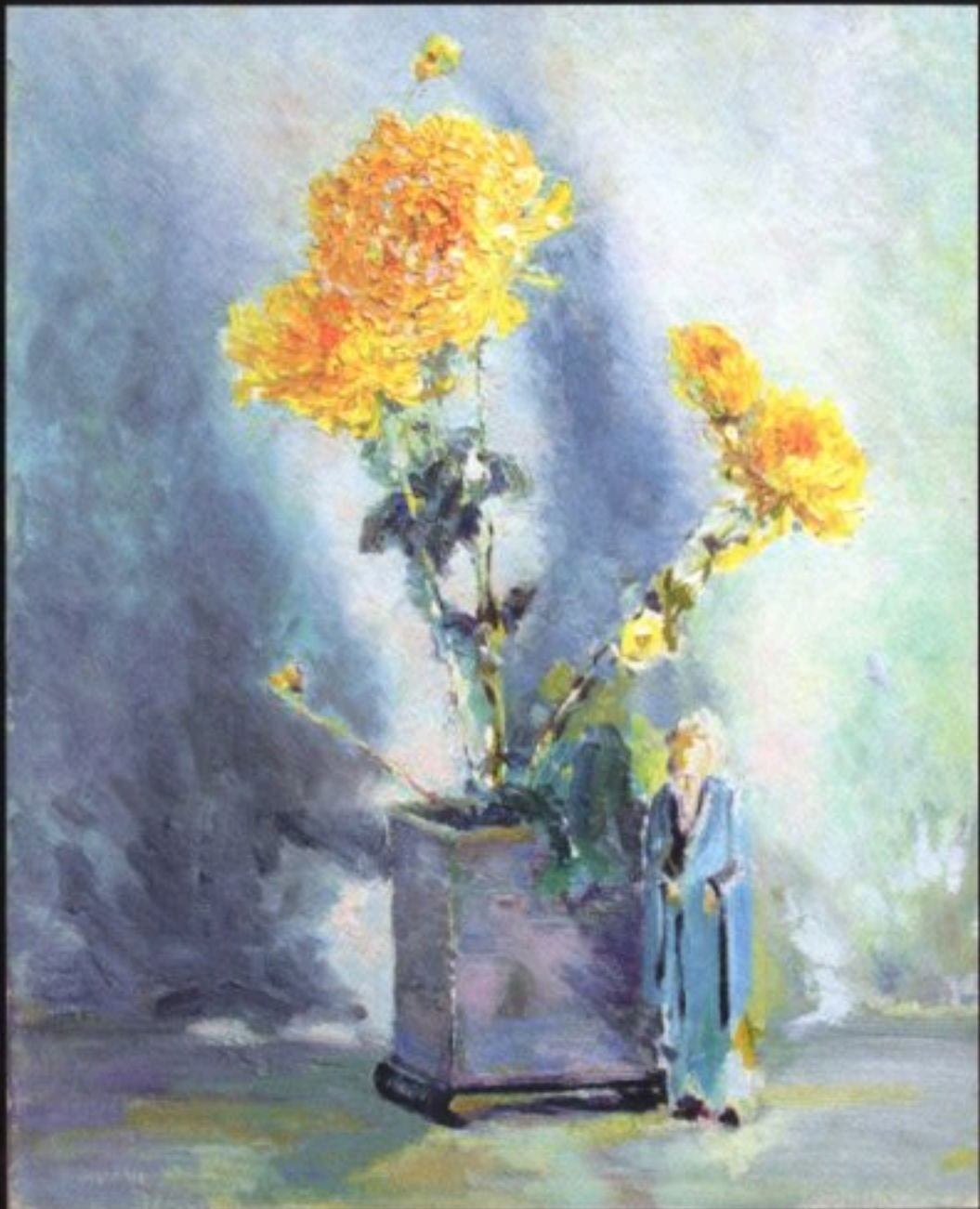
139. Azaleas
Oil on board
Dean and Teri Flanders Collection



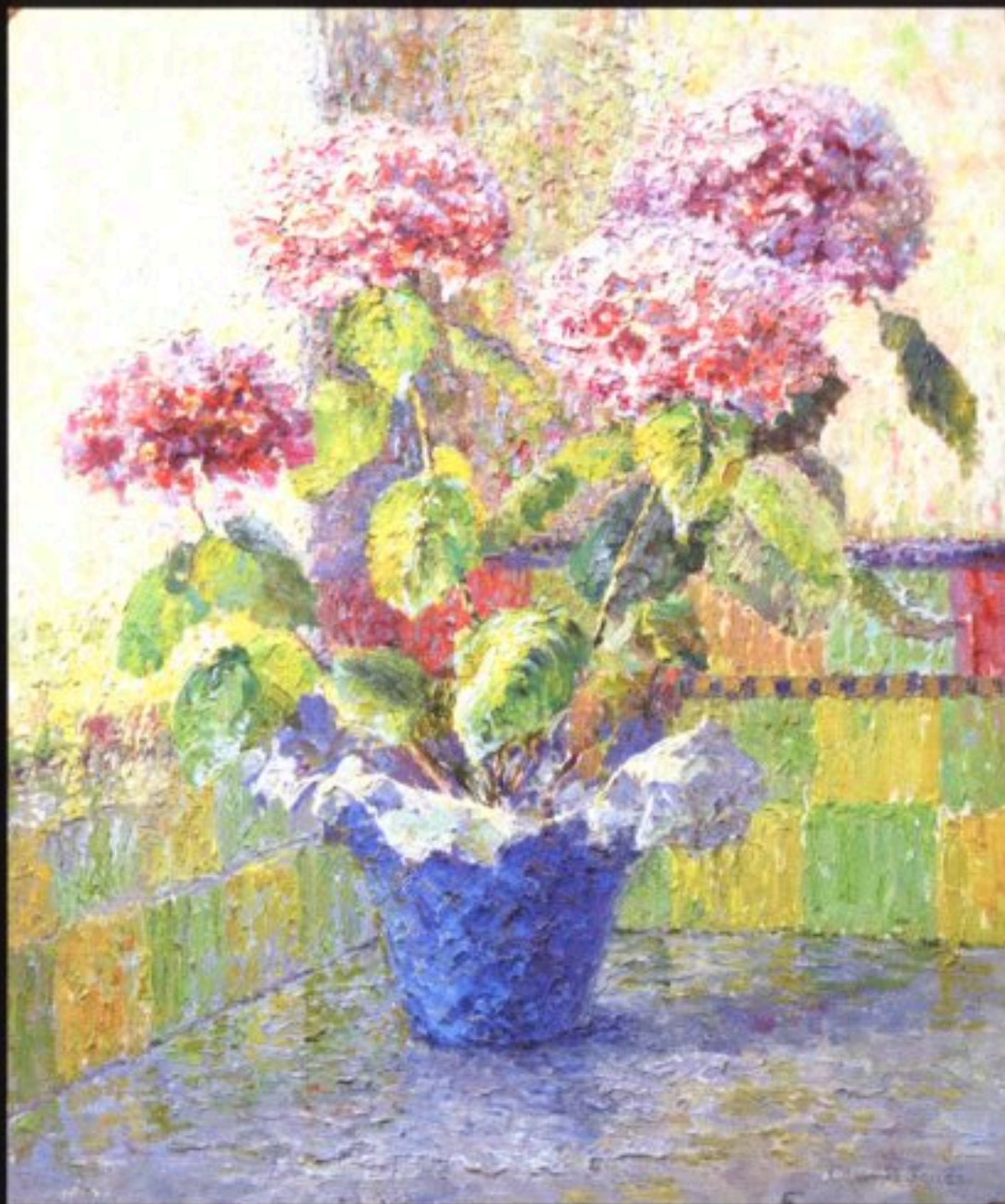
140. Azaleas
Oil on board (30" x 25")
Steve and Pam Flanders Collection



141. Carnations
Oil on canvas (16" x 24")
Mark and Dianne Flanders Collection



142. *Chrysanthemums*
Oil on board (16" x 20")
Conrad and Anne Jensen Collection



143. *Hydrangeas*
Oil on canvas (20" x 24")
Mark and Dianne Flanders Collection



144. *Chrysanthemums*
Oil on canvas (18" x 24")
Mark and Dianne Flanders Collection



145. *Flowers*
Oil on board (19" x 23")
Dean and Teri Flanders Collection



146. *Chrysanthemums*
Oil on board (16" x 20")
Steve and Pam Flanders Collection



147. Petunias
Oil on board (19" x 15")
Steve and Pam Flanders Collection



148. *Red Hot Pokers*
Oil on board (29" x 23")
Steve and Pam Flanders Collection



149. Peonies
Oil on board (24" x 29")
Steve and Pam Flanders Collection



150. Roses
Oil on board (20" x 16")
Steve and Pam Flanders Collection



151. *Roses*
Oil on board (16" x 20")
Steve and Pam Flanders Collection



152. Zinnias
Oil on board (17" x 23")
Steve and Pam Flanders Collection



153. *Chrysanthemums*
Oil on board (16" x 20")
Marcia and Scott Stornetta Collection



154. Iris
Oil on board (16" x 20")
Marcia and Scott Stornetta Collection



155. Roses
Watercolor (16" x 20")
Marcia and Scott Stornetta Collection

Emerson Douglas was a commercial artist in Ogden and long-time neighbor of Olive's. One day, many years after her death, Emerson called at the home of Olive's daughter, Arlene, and presented her with this pastel sketch. He explained that years earlier he had participated in several art classes with Olive, and one day made this sketch of her while she and an associate sat painting. Although Emerson never indicated which figure was Olive, she is presumed to be the woman on the right dressed in blue wearing black shoes. The folding chair, style of easel, and open pochade box on the ground match those known to be Olive's.



(Overleaf: contents of Olive's pochade box)



HALF
OIL COLOR
MEDIUM DRY
FERRERO

DEVCO
ARTIST'S
COLORS

CO. VARENNI
PARIS 11, 12, 13, 14, 15, 16, 17, 18, 19, 20, 21, 22, 23, 24, 25, 26, 27, 28, 29, 30, 31, 32, 33, 34, 35, 36, 37, 38, 39, 40, 41, 42, 43, 44, 45, 46, 47, 48, 49, 50, 51, 52, 53, 54, 55, 56, 57, 58, 59, 60, 61, 62, 63, 64, 65, 66, 67, 68, 69, 70, 71, 72, 73, 74, 75, 76, 77, 78, 79, 80, 81, 82, 83, 84, 85, 86, 87, 88, 89, 90, 91, 92, 93, 94, 95, 96, 97, 98, 99, 100

Indes...
de...
1...

Fiorini & Sons
Dyall's
ARTIST'S
COLORS

Arrive
L'Artiste
L'Artiste